

OPTIMUM UTILIZATION OF RENEWABLE ENERGY SOURCES IN A REMOTE AREA

¹Puli Ramaiah, ²Makam Sowmya, ³Yerram Sivasankar, ⁴Mallepogu Eswaramma, ⁵Baliya
Nagaraju, ⁶Mr. M. Shiva Kumar

Department of EEE

St. Johns college of Engineering and Technology, Yemmiganur, AP

ABSTRACT

An energy supply system must ensure the provision, production, and distribution of sustainable energy in the form of electricity, heat, or fuels. An integrated renewable energy system (IRES) may be used to meet the energy requirements of a region in a suitable and sustainable way. The rural electrification of distant regions using renewable energy may be achieved by modeling and optimizing the Integrated Renewable Energy System (IRES) to satisfy the energy requirements. The Jaunpur block in the state of Uttaranchal, India, has been chosen as a distant place for this study. Based on field data, estimates have been made on the potential of resources and the need for energy. The overall demand is 808 megawatt-hours per year (MWh/yr) and the total available resources are 807 MWh/yr. The percentage contribution of each resource is as follows: MHP (Micro Hydro Power) contributes 15.88% (128,166 MWh/yr), solar contributes 2.77% (22,363 MWh/yr), wind contributes 1.89% (15,251 MWh/yr), and biomass energy contributes 79.46% (641,384 MWh/yr). The model has been optimized using LINDO software version 6.10. The findings demonstrated that the optimized model has been identified as the most suitable option for fulfilling the

energy requirements of the region. Renewable energy sources, such as solar, wind, and biomass, may satisfy 16.81% (115,465 kWh/yr), 2.27% (15,588 kWh/yr), 1.78% (12,201 kWh/yr), and 79.14% (543,546 kWh/yr) respectively, of the entire energy demand of 687 MWh/yr at a reduced level of 808 MWh/yr (15% reduction). The findings also showed that an improved IRES can effectively meet energy requirements throughout the EPDF range of 1.0 to 0.75. However, below an EPDF of 0.75 (specifically between 0.50 and 0.25), the energy deficit begins and the model becomes an unfeasible solution. The EPDF, or electric power delivery factor, is a measure of optimal power factor and is always equal to or less than 1.

Keywords: Renewable energy; IRES modeling; Optimization; EPDF

I. INTRODUCTION

The increasing consumption of conventional fuels coupled with environmental degradation has led to the development of eco-friendly renewable energy sources. The development of remote rural areas could not take place even after more than 50 years independence, as the grid could not be extended due to its high cost, scattered nature of the area and low load factor. In recent years, the considerable R&D has

been initiated to energize such areas through renewable energy sources, which are the best candidate for supplying the energy in decentralized mode. Depending upon the topography of the area, energy resources potential available, and type of energy needs/demand and socioeconomic status of remote areas, the energy models can be developed and optimized in order to suit the needs of the area. Apart from meeting the energy needs using energy resources in individualistic manner, the demand can be best met using combination of the resources in integrative manner in cost effective and sustainable manner. The present study confines to electrical energy needs only. The aim of integrated renewable energy system (IRES) design is to pros of some energy sources with the cones of the other technologies. A reserve capacity is always necessary to act as a back up to overcome fluctuations in the electricity demand and supplies. The paper reports the literature review, features of study area, assessment of resources and the demand of energy, development of models, optimization and selection of appropriate model suitable for the area.

II. LITERATURE REVIEW

The concept based on an appropriate combination of solar, wind and biomass systems was used by [1] who proved that IRES is reliable and viable concept from energy production and utilization point of view. Further, the small-scale decentralized IRES concepts were discussed by [2] who considered SPV, solar thermal, wind, biomass and falling water as renewable resources. A methodology was also developed by [3] to design IRES using a linear programming (LP) approach, which minimizes an objective function of total annual cost, subject to a set of energy and power constraints. A mathematical approach

has been used in a simple and useful form and is directly applicable for the ARTICLE IN PRESS A.K. Akella et al. / Renewable and Sustainable Energy Reviews 11 (2007) 894–908 895 design of stand-alone IRES for rural area of developing countries. [4] focused on the design of stand-alone IRES with the technical and economic aspects and utilized loss of power supply probability (LPSP) as the key system variable. Some typical design scenarios were evolved by [5] using the knowledge-based design tool IRES-KB with the aid of KAPP(R)-PC development tools. A remote village with no electrical grid was chosen in the developing countries and the versatility of IRES-KB was proved. [6] further found that IRES can play significant role in meeting the energy need of a rural areas and to improving the living conditions of the people. He observed that the concept of energization through resource-need matching has been found to be preferable as compared to straightforward rural electrification. An optimal renewable energy model (OREM) was developed by [7], which minimized the cost/efficiency ratio with the social acceptance, resource limitation, and demand and reliability factors used as constraints. About 38 different renewable energy options are considered in the model. [8] developed a micromodel for designing a rural energy supply system considering lighting, cooking and irrigation as end use applications. A model was developed by [9] using Grey LP model and hourly loads and the hourly inflows expressed in Grey number notation, in order to reach an optimal scheduling under certain environment. A LP based energy model was developed by [10] to minimize the output of agricultural residue (biomass) by suitably allocating the land area for cultivation of various crops in a taluka of South India. The

model optimized the surplus biomass production using the available resource such as human, animal, tractor power, fertilizer and pesticides subject to the fulfillment of the food requirements of the taluka with regard to cereals, pulses, oilseeds, sugar, vegetables, fuel as well as animal fodder. Further, authors estimated the power potential from surplus biomass and matched the energy demand with the supply. It has been calculated the quantity of power that can be generated through biomass combustion process on the basis of 1.5 tons of agro-residue is equal to 1 MW h of electrical energy. A computer software package HYPER-LINPO using AT 486-DX2 Computer System was used to estimate the surplus biomass. The authors recommended the model for integrated energy planning at taluka level. [11] was a member of the Air Force group, formulated the general linear programming problem and devised the Simplex Method of solution in 1947. GMP was developed by [12]. [13] extended the method so as to be applicable to problems in which some of the terms in the objective and constraint functions may have negative coefficients. [14] developed a procedure for converting integer polynomial programming to zero-one Linear Programming problems. DP technique was developed by [15,16] in the early 1950s. [17] developed stochastic programming techniques and solved problems by assuming design parameters to be independent and normally distributed. The quadratic programming procedure was developed by [18] to apply phase I of simplex method. The literature reveals that very little work has been reported on integration of MHP with other sources. Since the study area, being hilly terrain, is rich in hydro resources, it was considered worthwhile to develop and optimize IRES

models consisting of MHP, biomass, solar and wind energy for the purpose of providing electricity to the study area

III. FEATURES OF STUDY AREA

Uttaranchal was created as new state in the year 2000 and consists of 13 districts, out of which Tehri Garhwal has been selected as the district of the study area as it comprises of



Fig. 1. Map of un-electrified villages (Uttarakhand state, district Tehri Garhwal, Jaunpur block).

major hilly and the fertile area under forest. The district is surrounded by Uttarakashi in the north, Dehradun in the west, Pauri Garhwal in the south and Rudrapur in the east as shown in Fig. 1. The area has a total area of 485 km² and total population 50,636. The total numbers of villages are 259 with 202 electrified and 57 un-electrified villages. The electrification of 24 villages has been taken under by Uttarakhand Renewable Energy Development Agency (UREDA) using biomass followed by hydro resources.

Table 1
Data of Jaunpur block

Sr. no.	Items	Total
1	No. of villages	259
2	No. of un-electrified villages (by UREDA)	24
3	No. of water mills (Gharri) installed	52
4	No. of springs available	30
5	No. of falls available	8
6	No. of reserved forest (RF)	22

Table 2
General features of study area (Jaunpur block)

Features	Uttanchal	Zone 1	Zone 2	Zone 3	Zone 4
Total population	8,470,962	13,843	7574	19169	9840
Income group	LIG/MIG/HIG	HIG	MIG	MIG	LIG
Geology	28.47-31.20 N, 77.35-80.55 E	30.04-30.34 N, 78.03-78.14 E	30.04-30.34 N, 78.03-78.14 E	30.04-30.34 N, 78.03-78.14 E	30.04-30.34 N, 78.03-78.14 E
Un-electrified villages (7%)	1127 out of 16,414 villages	01	08	03	12
Economic	Economically weak state	Economically poor zone	Economically very poor zone	Economically most backward and weaker zone	Economically most-most poorest and weakest zone
Social	Socially poor state	(i) Lack of education (ii) Lack of communication (iii) Lack of water supply (iv) Backward area	(i) Lack of welfare center (ii) Literacy rate very poor (iii) Lack of communication (iv) Most backward area	(i) Lack of education (ii) Near Dehradun area (iii) No any type of road (iv) Backward area and remote area	(i) Lack of education (ii) No medical facility (iii) No any type of road (iv) Most backward and remote area

As per Table 1, the Jaunpur block (study area) divided in to four zones and only 9% of the total villages are un-electrified, which have been considered for the present study as the best candidate for electrification by decentralized IRES systems consisting of biomass, MHP, solar and wind energy resources. Head quarter is located in New Tehri. Out of 10 blocks (Vikas Khand), the block Jaunpur was selected as remote area for the present study. Table 2 depicts the main features of the area, which shows that 0.16% population is high, 0.32% middle, and 0.12% low-income group people. The later has been observed to be economically poorest and weakest and lack enough for employment opportunities, have very poor purchasing power and are totally dependent upon natural forest for their energy and material demands. A total of 24 un-electrified remote villages have been considered to be electrified by renewable electricity. This will enable the people to set-up small-scale industries and raise their living standards. However, the present study will focus only on the energization of 12 villages of Zone 4 through of IRES system.

3.1. Assessment of energy potential and energy demand

The energy resources data as given in Table 3 shows that the biomass constitutes maximum potential (641 MW h/yr) followed by micro-hydro (128 MW h/yr), solar (22 MW h/m² /yr) and wind energy (15 MWh/m² /yr). Though the actual

exploitation of potential will depend upon the system configuration, its cost in terms of cost of energy is delivered. The data also shows that the total potential including all the resources considered is about 807 MW h/yr while the total demand are 808 MW h/yr. This means that the energy demands of the area can be fully met by fully exploiting the available resources. Therefore, the entire electricity generation will be 807 MW h/yr and accordingly the model consisting of MHP, BES (Gasifier system only), SPV, and WES has been considered. The unit energy costs have been calculated using standard procedures described by [19] and is based on Capital cost of Installed capacity, O&M costs, life of plants, etc. used for calculation for each resource. The results as reported in Table 4 show that the unit cost of energy from different resources has been found as 1.50 from MHP, 3.10 from biomass, 3.00 from wind and Rs 15.27 per unit from SPV. The energy needs of the area have been identified as domestic, agricultural, transportation and motive power for small-scale industries. The energy demands in different sectors calculated on the basis of data collected are given in Table 5, which shows that the total demand is lower than energy production after considering 15% of the reduced demand. The load demand has therefore been reduced for the proper fulfillment of the load, which allows the model to function, failing which the model can not function under the condition when load becomes more than the resource. The available resources considered above may therefore be able to satisfy about 85% of the demand, 687 MW h/yr.

IV. MODELLING OF IRES SYSTEM

The challenge in designing a reliable renewable energy system is to find a

combination of technologies where the pros of some types balanced out the cons of the others. A reserve capacity is necessary as a backup for fluctuating sources, especially in the electrical system. Designing a combination of renewable technologies where fluctuations in production match a varying demand, such that any fluctuations in supply never lead to electrical production that cannot meet the demand, can minimize this capacity. The model requires the assessment of the energy share of each of the supply inputs with the objective of achieving a minimum cost of energy generation. An integrated energy model has been constructed for the major end uses lighting mainly and other uses also. The general model can be formulated on basis of LP

$$\begin{aligned} \text{Minimize : } & Z_T = \sum C_{ij} \times X_{ij} \\ \text{Subject to : } & \sum X_{ij} = D_j \\ & \sum X_{ij} / \eta_{ij} \leq S_i \\ & X_{ij} \geq 0 \end{aligned}$$

Table 3
Data of electricity usage of 2016-17

Sl. no.	Village name	Total day (hr)	House loads	Population	Total load (kW h/yr)		Demand (kW h/yr)		Total excess (kW h/yr)
					Municipalities (kW h/yr)	State (kW h/yr)	Municipalities (kW h/yr)	State (kW h/yr)	
1	Sala	72000	14.7	46	11400	2471	000	076	11324
2	Shankar	72000	11.40	7	14,071	54.4	000	076	14000
3	Shankar	72000	41.32	7	16,251	54.4	000	076	16175
4	Shankar	72000	17.1	4	14,144	54.4	000	076	14068
5	Shankar	72000	24.74	8	16,444	140	000	076	16368
6	Shankar	72000	44.01	10	18,071	54.4	000	076	17995
7	Shankar	72000	41.44	14	14,071	54.4	000	076	14000
8	Shankar	72000	14.71	14	11,144	11,301	000	076	11268
9	Shankar	72000	12.42	10	12,444	11,301	000	076	12368
10	Shankar	72000	17.36	11	14,044	54.4	000	076	14000
11	Shankar	72000	11.47	46	11,000	1072	000	076	10924
12	Shankar	72000	17.14	11	17,144	14,301	000	076	17068
13	Shankar	72000	17.14	11	17,144	14,301	000	076	17068
14	Shankar	72000	17.14	11	17,144	14,301	000	076	17068

NA, not available. Total load required in the study area is 107,140 kW h/yr or 107,140 MW h/yr. Total demand available in the study area is 107,140 kW h/yr or 107,140 MW h/yr.

Table 4
Cost of energy (C/E)

Resource (system)	Cost function (unit)	Installed capacity (kW)	Potential power (kW)	Installed capacity cost (Rs)	Estimated annual capacity factor (%)	GEM cost (Rs/ kWh)	Usual life (yr)	Per unit cost (Rs/kWh)
SPV	C_{SPV}	2	100	100,000-150,000	0.11-0.25*	1.23	20	15.27
WEP	C_{WEP}	1025	125,100	125,000	0.70*	0.342	25	1.36
BES (biogas plant) engine (system)	C_{BES}	70	64,204	210,000-270,000	0.9-0.100*	1.308	20	5.10
BES	C_{BES}	5	120	41,000-50,000	0.24-0.0.25*	0.0850	20	1.1

Generally 4 ranges from 0.1 to 1 and (*) indicates calculated values of it.

Table 5
Total electricity consumption/demand

Energy consumption sector	Energy demand (MW h/yr)
Domestic	701
Manufacturing	27
Agriculture	0.134
Transportation	0
Total demand	808
15% Reduced demand	687

where ZT is the total cost of providing energy for all end uses for operation of the system; C_{ij} , cost/unit of the i th resource

option for j th end use (Rs/kW h); X_{ij} , optimal amount of i th resource option for j th end use (kWh); D_j , total energy for j th end use (kW h); S_i , availability of i th resource option for j th end use (kW h); Z_{ij} , conversion efficiency for i th resource option for j th end use. The final model can be formulated as:

$$\begin{aligned} \text{Minimize : } & Z = 1.50\text{MHP} + 15.27\text{SPV} + 3.50\text{WES} + 3.10\text{BES} \\ \text{Subject to : } & \text{MHP} + \text{SPV} + \text{WES} + \text{BES} = D \text{ kW h/yr} \\ & \frac{\text{MHP}}{0.9} \leq 128,166 \text{ kW h/m}^2/\text{yr} \\ & \frac{\text{SPV}}{0.9} \leq 22,363 \text{ kW h/m}^2/\text{yr} \\ & \frac{\text{WES}}{0.80} \leq 15,251 \text{ kW h/m}^2/\text{yr} \\ & \frac{\text{BES}}{0.85} \leq 641,385 \text{ kW h/m}^2/\text{yr} \\ & \text{MHP, SPV, WES, BES} \geq 0 \end{aligned}$$

where D (1/4 686,800 kW h/yr or 687 MW h/yr) is demand for model.

The above model shows that about 94% (641) of the total demand (687MW h/yr) can be meet from biomass alone using gasifier engine system of suitable capacities, there by indicating that the selected area is very rich in biomass resource which could be the major source for energization of the area in future. Further, MHP has been found to provide about 19% (128) of the total demand. This may open new avenues for the exploitation of the hydro resources in the state. The other two sources like SPV and wind have marginal contribution, i.e. 3% (22) and 2% (15MW h/yr), respectively. The present model has been adopted in order to make best use of the potential of the above sources, so that minimum cost of energy generation can be arrived from integration of all the sources as against the fact that the cost of energy is variable such as Rs 15.27 in the case of SPV, Rs 3.50 for wind, Rs 3.10 from biomass gasifier engine and Rs 1.50 per unit from MHP on the individual resource basis.

V. OPTIMIZATION OF IRES MODELS

Various optimization techniques for Integrated Renewable Energy Sources have been reported in the literature like: (i) linear programming (LP) [11]; (ii) geometric programming.

(GMP) [12,13]; (iii) integer programming (IP) [14]; (iv) dynamic programming (DP) [15,16]; (v) stochastic programming (St P) (Dantzig and Charnes and Cooper (1955, 1959)); (vi) quadratic programming (QP) [18]; (vii) separable programming (Se P); (viii) multiobjective programming (MOP); (ix) goal programming (GP); (x) HOMER; (xi) VIPOR; and (xii) Hybrid 2, etc.

Presently, the softwares available for optimization are LINDO, LINDO API, LINGO, HOMER, VIPOR, TORA, etc., out of which LINDO software 6.10 version [22] has been reported to be the most traditional package for solving linear, integer and quadratic optimization models. The software offers the most comprehensive tools for studying the inner workings of the revised Simplex Method used to solve linear optimization models [21]. Its unique features are its goal programming, parametric analysis and efficient solution of quadratic programs. The software has been used as per the flow chart given in Fig. 2. To account for the reduction in the total energy delivered by the MHP/SPV/BES/ WES, a term known as effective power delivery factor (EPDF) has been introduced, which may be defined as the ratio of power obtained per season (or year) to the maximum power available per season (or year) [22].

$$EPDF = \frac{\text{Power obtained/season (or year)}}{\text{Maximum power available/season (or year)}}$$

The epdf is normally used to improve life-cycle costs of the system, save power, save energy costs and reduce losses and is also sometimes called optimizing power factor.

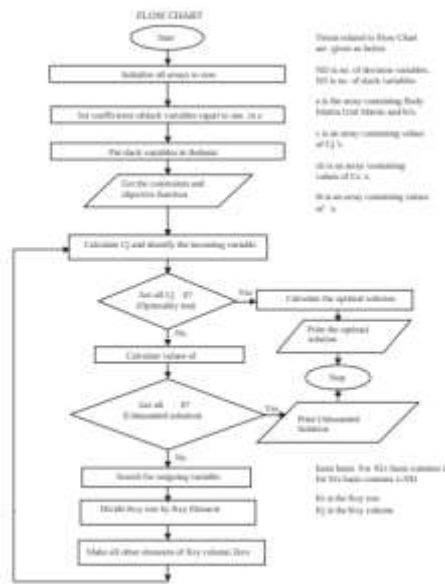
VI. RESULTS AND DISCUSSION

The results of optimization of the model using LINDO software 6.1 Version are given in Table 6 and graphically represented in Figs. 3–5, which indicate that at an EPDF of 1.0, the plants deliver the maximum energy to the load. Similarly, an EPDF of 0.75 gives 25% reduction in the energy delivery capability of the plant. In

the present model, it is felt also that the breakdown/non-functioning of any one of renewable sources may drastically affect the overall system energy delivery capability.

The above results show the varying effect of EPDF on load shared by MHP, SPV, BES, and WES sources. At EPDF 1.0, MHP, SPV, WES, and BES fulfill the total load. Under this condition, the unit cost of energy of Rs 3.11/kWh is obtained. A reduction of EPDF from 1.0 to 0.25 indicates that all the four systems can meet the load at proportionally reduced level, against a total demand of 687 MW h/yr. With decrease in EPDF from 1.0 to 0.75, the cost of generation increases while a further reduction of EPDF leads to decrease in cost of energy and hence the energy deficit increases.

Further, the above results indicate that the present model of IRES can be feasibly utilized for energization of the study area between the EPDF values of 1.0 and 0.75. The model becomes unfeasible because of the increase in the energy deficit beyond EPDF of 0.75 and load is not properly fulfilled. It is clear from Table 6 that with decrease in EPDF there is an increase in the energy needs from MHP, though the constraints is of limited potential available which cannot be increased and therefore only MHP cannot be used to meet all the demand. Further, the potential from SPV also decreases even though the potential available is much more but the higher cost of the SPV system renders its use very limited. In the case of wind energy, the available potential is not harnessed due to the poor wind speeds available in the area thus making the use of the systems very uneconomical.



Regarding the biomass energy it is clear that from EPDF 1.0 to 0.25 there is continuous decrease in the energy generation while the potential is too much. In order to fully utilize the biomass resource, one is required to explore the possibility of generating electricity using biomass gasifier engine system in decentralized mode because the cost of generation from the individual source is Rs 3.10, which fully matches with the cost of energy from the IRES system (Rs 3.11 per unit cost). Therefore, it may be concluded that depending upon

Table 6
Optimization results

Sl no.	EPDF	Objective Function: optimal cost (Rs)	MHP (kW/h)	SPV (kW/h)	WES (kW/h)	RES (kW/h)	Energy deficit (kW/h)	Unit cost (Rs/kWh)	Change in unit cost (%)
1	1.00	2,134,710	115,407	15,380	12,281	343,546	0	3.11	0
2	0.75	4,176,331	86,589	103,181	9131	407,668	106,782	6.88	49
3	0.5	1,617,229	398,833	10,073	6189	271,773	379,644	2.23	-32
4	0.25	1,436,326	485,237	7891	4279	198,540	495,725	2.99	-48
5	0.25	1,321,715	542,626	5637	3059	115,806	570,496	1.92	-62

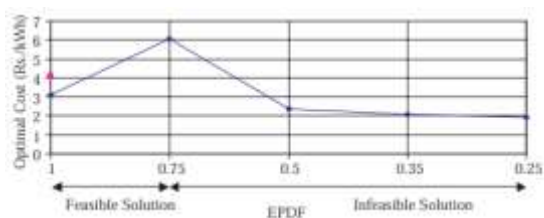


Fig. 3. Variation of optimal cost with EPDF for energy model.

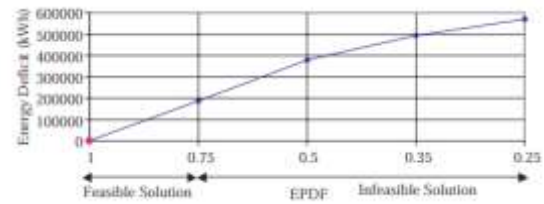


Fig. 4. Variation of energy deficit with EPDF for energy model

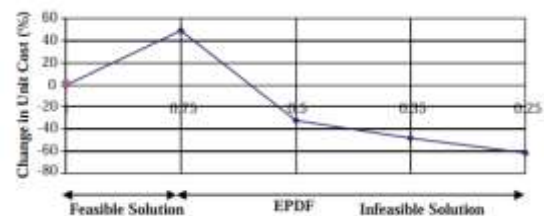


Fig. 5. Variation of change in unit cost with EPDF for energy model.

the distribution of the resource in the given area either a suitably designed and optimized IRES system or a biomass based gasifier engine system can be suitably used for the study area.

Based upon the above results, Figs. 3–5 give the variations of different values of EPDF with respect to the optimal cost of the system, energy deficit and the change in the unit cost, respectively. The values of EPDF for feasible solutions can be obtained by optimization.

VII. CONCLUSION

Given the global energy shortages and environmental consequences of using fossil fuels, the idea of implementing IRES (Integrated Renewable Energy Systems) has been proposed for the 12 unelectrified villages in Zone 4 of Jaunpur block, located in the Tehri Garhwal district of Uttarakhand state in India. This is to address their energy requirements. The energy cost per unit from each resource has been computed based on the available resources and the demand of the studied region. A model for an Integrated Renewable Energy System (IRES) has been developed and fine-tuned using LINDO software version 6.10. The components of the system include a Micro

Hydro Power (MHP) system, a Solar Photovoltaic (SPV) system, a Wind Energy System (WES), and a Battery Energy Storage (BES) system. The findings suggest that the model can only provide a viable solution when using EPDF 1.0–0.75 or higher, but it becomes unviable beyond this range. The findings also suggest that either an Integrated Renewable Energy System (IRES) including the aforementioned sources or a standalone biomass gasifier engine system may effectively provide the energy requirements within the EPDF range of 1.0 to 0.75 for the specified location. The findings are validated using TORA software version 1.00. The comparison findings are also shown between the LINDO and HOMER applications. The feasibility research indicates that the IRES (Integrated Renewable Energy Systems) are the most appropriate and practical technology for any distant rural location.

REFERENCES:

- [1] Jain BC. Rural energy centres based on renewable—case study on an effective and viable alternative. *IEEE Trans Energy Convers* 1987;EC-2(3):329–35.
- [2] Ramakumar R. Renewable energy sources and developing countries. *IEEE Trans Power Appar Syst* 1983;PAS-102(2):502–10.
- [3] Ramakumar R, Shetty PS, Ashenayi K. A linear programming approach to the design of integrated renewable energy systems for developing countries. *IEEE Trans Energy Conversion* 1986;EC-1(4):18–24.
- [4] Ashenayi K, Ramakumar R. IRES—a program to design integrated renewable energy system. *Energy* 1990;15(12):1143–52.
- [5] Ramakumar R, Abouzhar I, Krishnana K, Ashenayi K. Design Scenarios for Integrated Renewable Energy Systems. *IEEE Trans Energy Conservation* 1994;10(4):736–46.
- [6] Ramakumar R. Energizing rural areas of development countries using IRES. *IEEE Trans Energy Conversion* 1996; 1536–41.
- [7] Iniyan S, Jagadeesam TR. On the development of reliability based optimal renewable energy model for the sustainable energy scene in India. *Int J Ambient Energy* 1997;18(3):153–64
- [8] Sinha CS, Kandpal TC. Optimal mix of technologies for rural India: the irrigation sector. *Int J Energy Res* 1991;15:331–46.
- [9] Liang RH. Application of Grey Linear Programming to short-term hydro scheduling. *Electr Power Syst Res (ELSEVIER)* 1997;41:159–65.
- [10] Kanniappan P, Ramasamy S, Ramachandran T, Sankaranarayanan S. Optimal utilization of biomass for rural energy needs. *World Renewable Energy Congress (WREC)* 1998; 2020–3.
- [11] Dantzig GB. Programming and extensions. Princeton: Princeton University Press; 1963.
- [12] Duffins RJ, Peterson EL, Zener C. Geometric programming: theory and applications. New York: Wiley; 1967.
- [13] Passy U, Wilde DJ. Generalized polynomial optimization. *SIAM J Appl Math* 1967;15(5):1344–56.
- [14] Watters LJ. Reduction of integer polynomial programming problems to Zero-One Linear Programming Problems. *Operation Res* 1967;15(6):1171–4.
- [15] Bellman RE. Dynamic programming. Princeton, NJ: Princeton University Press; 1957.
- [16] Bellman RE, Dreyfus SE. Applied dynamic programming. Princeton, NJ: Princeton University Press; 1962.
- [17] Charnes, Cooper WW. Chance constrained programming. *Manag Sci* 1959;6:73–9.

- [18] Wolfe P. The simplex method for quadratic programming. *Econometrica* 1959;27:382–98.
- [19] Ramakumar R, et al. Economic aspects of advanced energy technologies. *Proc IEEE* 1993;81(3):318–32.
- [20] Website: www.epri.com.
- [21] Website: www.lindo.com